



Adding Intelligence to Video Surveillance



SMART ON SITE

Mate Intelligent Video

Quick Setup Guide

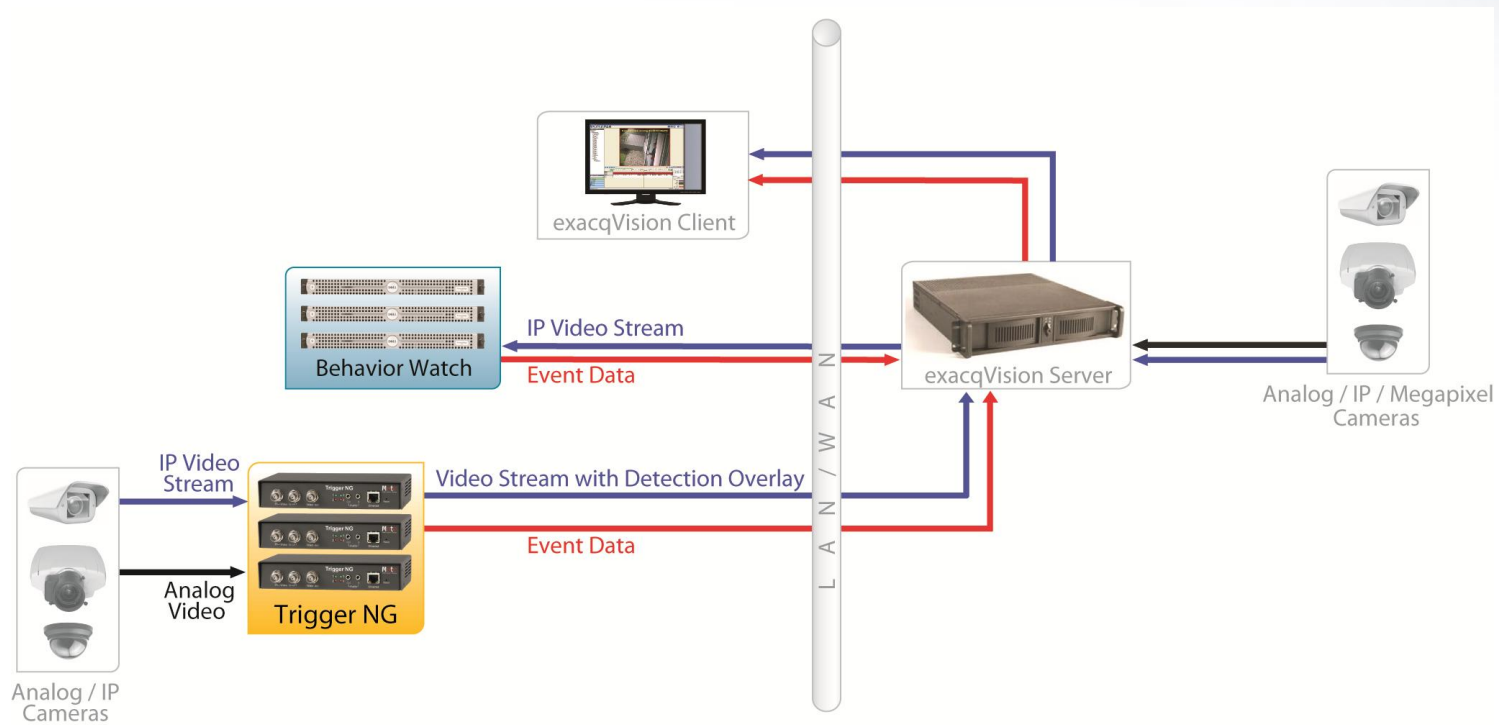
exacqVision Integration

Mate-exacqVision Integration Overview

The integration includes the following components:

- **exacqVision Server**
- **Mate BW server(s) and/or Trigger device(s)** – Configured with Mate Rules Management Tool
- **Mate Event Mediator** – To be installed on any available Windows machine (usually on the exacqVision server or on the Mate BW server).
- **Event Configuration file (XML)** – To be configured by the installer before running the Event Mediator.

Mate-exacqVision System Architecture



Mate-exacqVision Integration Quick Setup

• Mate Event Mediator Installation Process:

1. Browse to the Event Mediator directory and run the setup.exe (See figure 1)
2. Click 'Next' to proceed – Option to change the installation path (See figure 2)
3. Click 'Next' to start the installation (See figure 3)
4. Lastly, click 'Close' to complete the installation

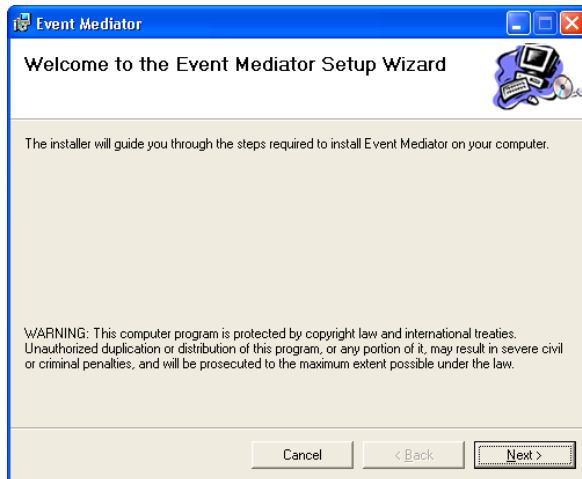


Figure 1

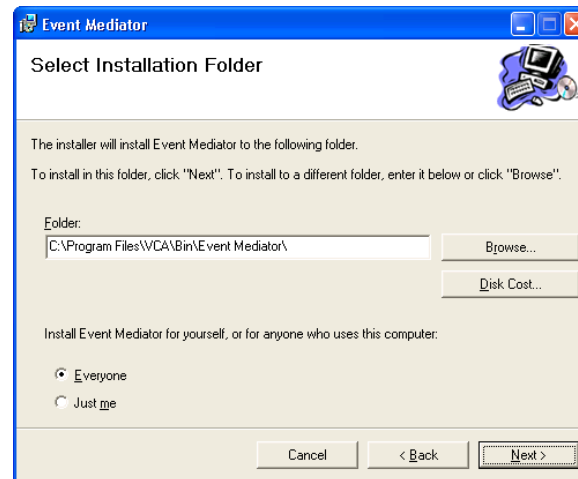


Figure 2

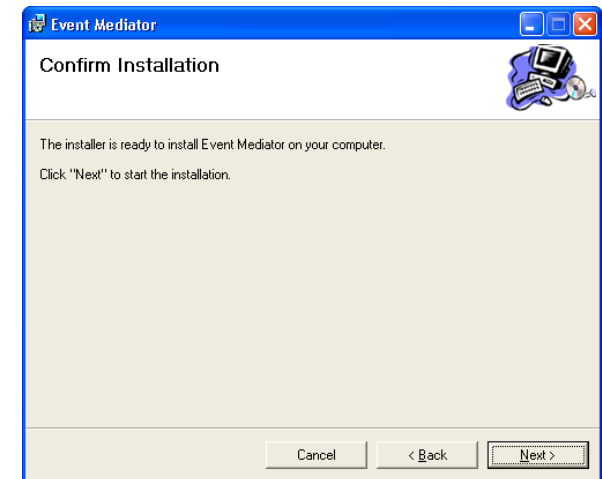


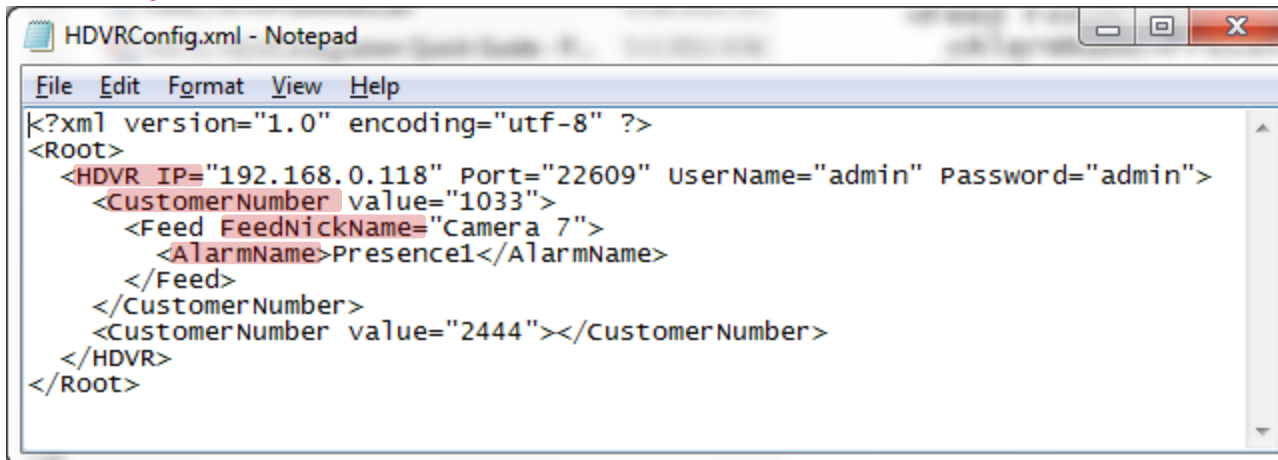
Figure 3

Mate-exacqVision Integration Quick Setup

• Configuring the Event Configuration XML File :

1. Browse to the installed Event Mediator directory - *C:\Program Files\VCA\Bin\Event Mediator\Publishers*
2. Open the HDVRConfig.xml file (See figure 4)
3. Enter the exacqVision server IP address (default port, username, and password are already there)
4. For each BW server or Trigger device enter the following data:
 - i. *CustomerNumber* – Mate Device ID.
 - ii. *FeedNickName(s)* – Mate Camera Name(s) - for the specific device.
 - iii. *AlarmName(s)* – Mate Alarm Name(s) - for the specific camera.

NOTE: Update this file after adding / removing / renaming rules or cameras in the Rules Management. Each feed may have more than one *AlarmName*. Each exacqVision server may work with multiple Mate devices (Device IDs).



```
HDVRConfig.xml - Notepad
File Edit Format View Help
<?xml version="1.0" encoding="utf-8" ?>
<Root>
  <HDVR IP="192.168.0.118" Port="22609" UserName="admin" Password="admin">
    <CustomerNumber value="1033">
      <Feed FeedNickName="Camera 7">
        <AlarmName>Presence1</AlarmName>
      </Feed>
    </CustomerNumber>
    <CustomerNumber value="2444"></CustomerNumber>
  </HDVR>
</Root>
```

Questions ?

Technical Contacts Info:

Mate Intelligent Video, Inc.

Eldor Reif – Western US
Professional Services
(925) 999 8885
eldor@mangodsp.com

Golan Malka – Eastern US
Technical Support
(703) 889 8376
golan@mateusa.net



Adding Intelligence to Video Surveillance



SMART ON SITE

Mate - Intelligent Video

Thank You